



Control Access to the Internet

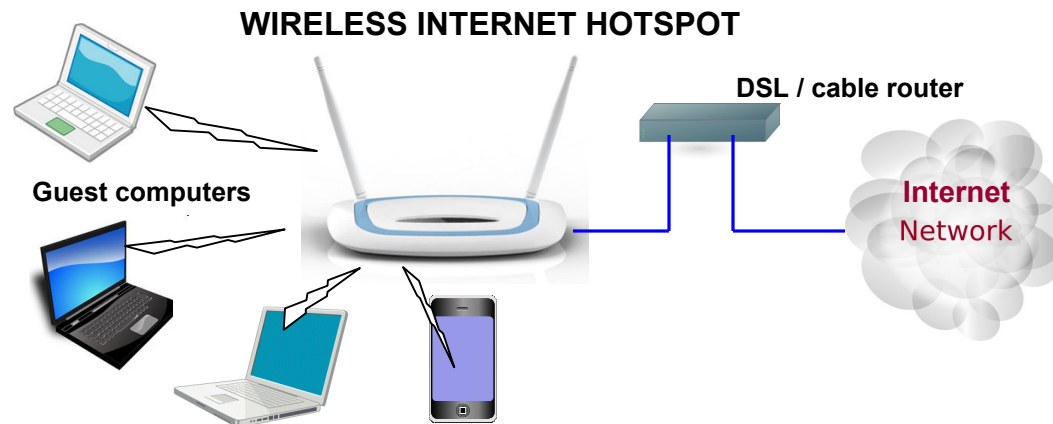
Manage Internet Access Quickly and Economically Using Guest Internet Gateway Products



Internet WiFi Hotspots are available everywhere



- Internet WiFi Hotspots are now the preferred method of connecting to the Internet with
 - Smart phones: use of a WiFi hotspot because of data limits
 - Tablets: 99% of tablets only have WiFi, no 4G
 - Laptops: users need WiFi hotspots to connect to the Internet

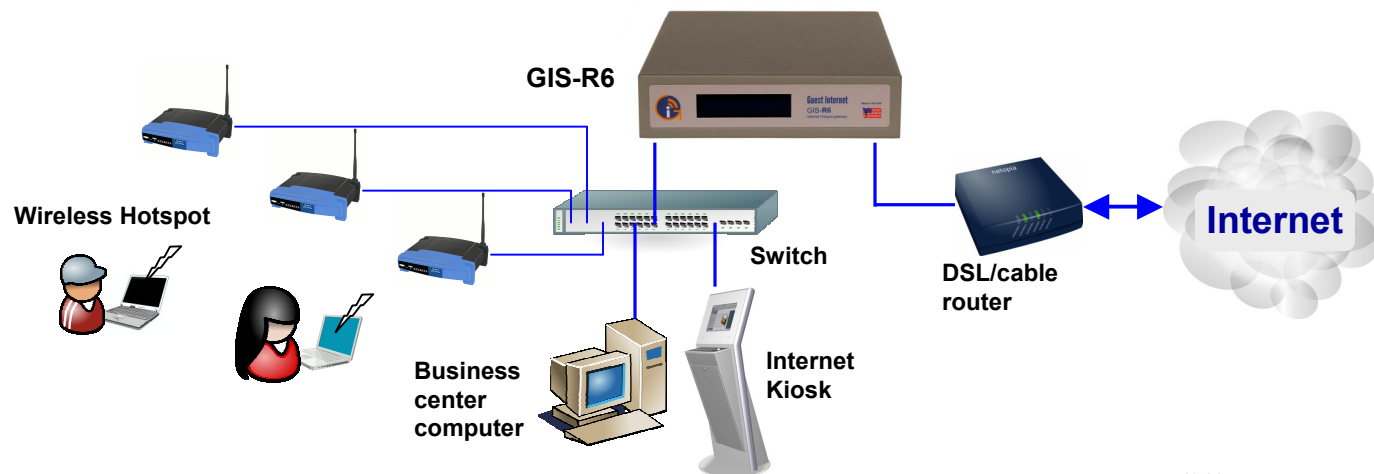


- Guest Internet is a leading global manufacturer of Internet Hotspot controllers that cater to the smallest coffee bar with 1 or 2 users, up to a large sports stadium with thousands of users.

Guest Internet gateway products control access to the Internet

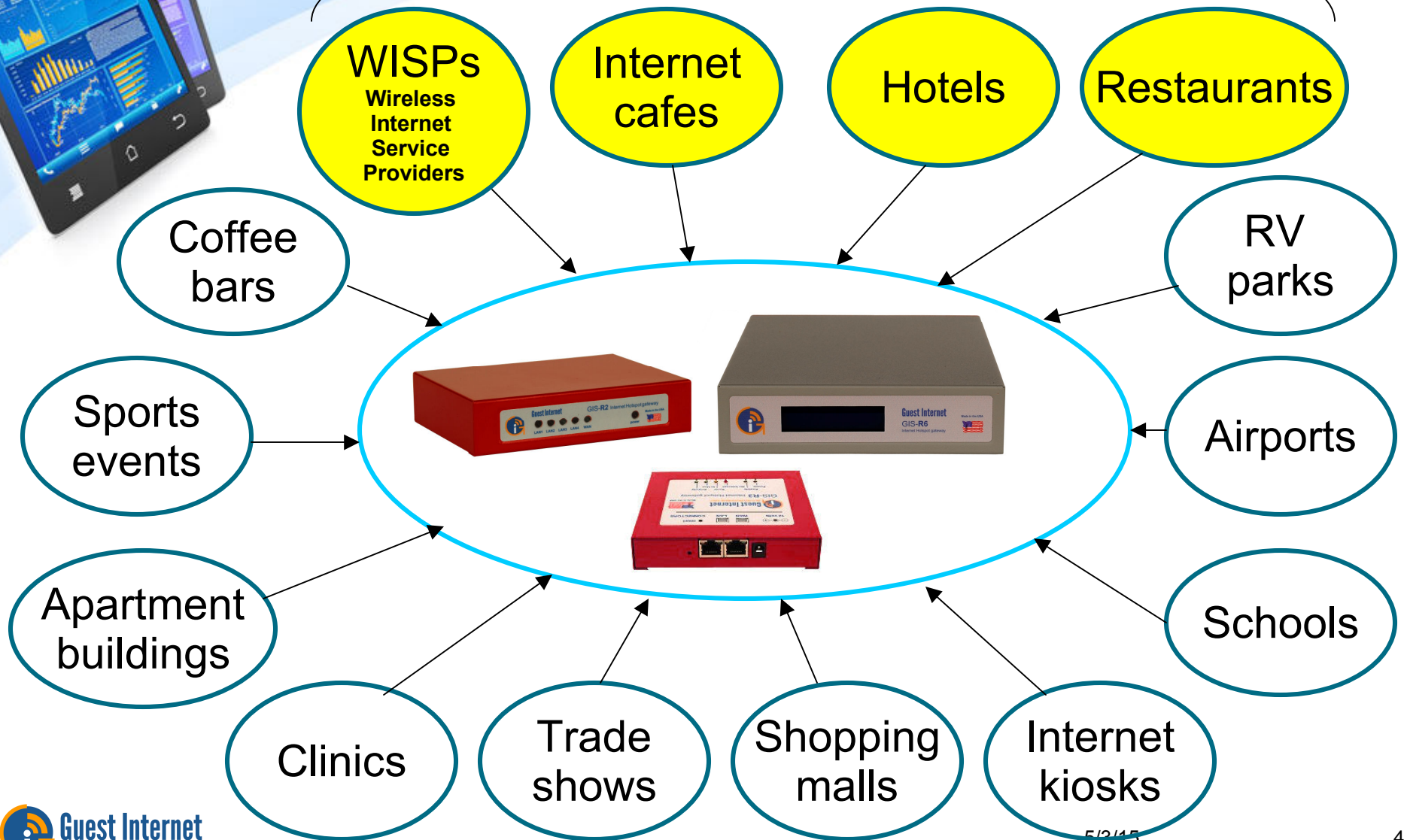


- Can be installed by the business owner, no special technical skills are required
- Multi-language login page with disclaimer
- Access codes with thousands of options
- Can be used for billing, or to control free access
- Share bandwidth between many users
- Block viruses, and block P2P Torrent traffic
- 1 to 1000 users: depends on the product model
- Multi-WAN redundancy: load-balance and fail-over



Many types of customers use Guest Internet products

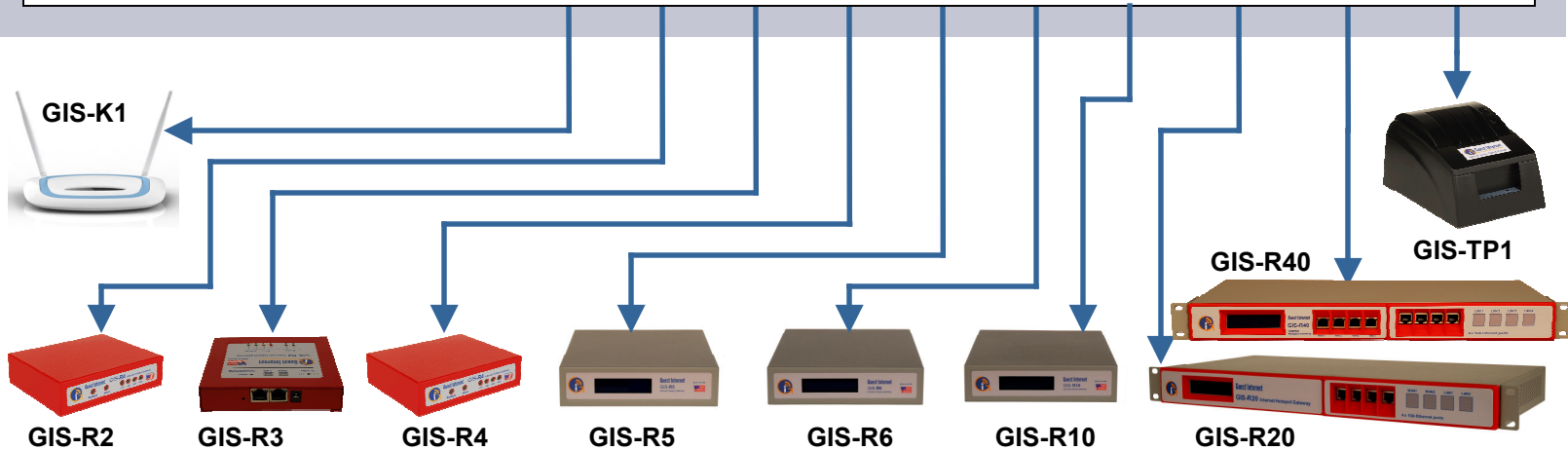
Popular applications



Product Range: 1 to 1000 users

At a Glance Product Model Features

	GIS-K1	GIS-R2	GIS-R3	GIS-R4	GIS-R5	GIS-R6	GIS-R10	GIS-R20	GIS-R40	GIS-TP1
Core GIS features	●	●	●	●	●	●	●	●	●	
Social WiFi Hotspot	●	●	●	●	●	●	●	●	●	
Advanced firewall	●		●	●	●	●	●	●	●	
PayPal® & Credit Card Billing	●		●	●	●	●	●	●	●	
Peer to peer Torrent blocking	●		●	●	●	●	●	●	●	
2 Wan fail-over					●		●			
3 WAN fail-over								●		
6 WAN fail-over									●	
Ticket printer support	●	●	●	●	●	●	●	●	●	●
Built-in Wireless (WiFi)	●									
Users	25	50	100	150	100	200	250	500	1000	
Throughput	10Mb/s	10Mb/s	15Mb/s	20Mb/s	2x15Mb/s	40Mb/s	2x50Mb/s	3x100Mb/s	6x100Mb/s	



Many Features: Complete Solution



- Low cost Internet gateway range supports from 1 to 1000 users
- Plug and play: easy to use wizard speeds installation
- Custom login page; multi-language with 12 backdrops or custom design
- Editor for the legal disclaimer
- Control Internet access with codes that are generated and managed on the unit
- Social media login with Facebook, fetch user profile and like the business page
- Reporting that tracks Internet access code usage
- A firewall protects the business network PoS for PCI DSS compliance
- QoS overall bandwidth control, with bandwidth settings for each code
- Content filter blocks access to non-approved websites
- Timer calendar blocks use outside business hours
- Access code API for PoS and PMS applications
- Peer to peer (P2P) Torrent blocking stops illegal downloads
- Credit card billing using PayPal®™
- Website URL and MAC filtering
- Access point failure monitoring and port forwarding
- Issue printed access codes using the GIS-TP1 Ticket Printer
- Remote login for configuration and reporting: suitable for WISP applications



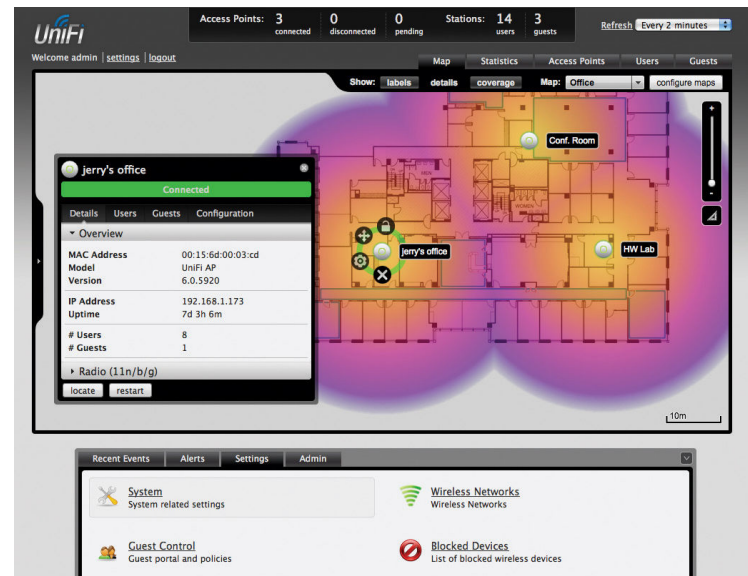
Guest Internet products compliment Ubiquiti products

- Guest Internet adds advanced Hotspot functionality to Ubiquiti wireless products



- Ubiquiti UniFi products have limited Internet Hotspot capabilities: Guest Internet adds many more features

All product and company names are trademarks™ or registered® trademarks of their respective holders.

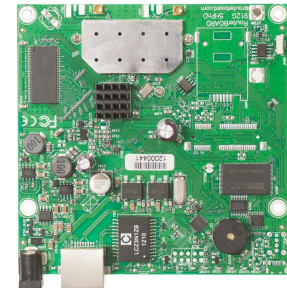


Guest Internet products compliment Mikrotik wireless products



- Guest Internet products add Internet Hotspot functionality to Mikrotik wireless products

MikroTik
routerboard



All product and company names are trademarks™ or registered® trademarks of their respective holders.

- Guest Internet provides an alternative to Mikrotik router products for Internet Hotspot applications
 - No scripting, easy to use graphic interface
 - Time to deployment is minutes, not days
 - Guest Internet products can be installed by the business manager – no programming skills are required
 - Mikrotik products are low cost, however programming and maintaining Mikrotik products has a high service cost





Guest Internet quick start guide

- A quick start guide is shipped with each product, available in three languages: English, Spanish and Portuguese
- The quick start guide was developed for non-technical customers: business managers and support staff

Guest Internet Hotspot Gateway Product Setup - Quick Start Guide 1

Download the product manual at: <http://www.guest-internet.com/gateway>

The Guest Internet Hotspot Internet gateway products have Ethernet LAN ports that are used to connect wireless access points, Internet café kiosk computers, wired hotel rooms and business center computers. The Internet (WAN) ports must be connected to the DSL or cable modem, or to a T3 or fiber circuit.

First connect the gateway as shown in the diagram to configure it using the setup wizard.

GIS-R20

Connect your computer Ethernet connector to the LAN1 connector of the gateway. Your computer Ethernet connector should be configured for dynamic IP or as a DHCP client. It cannot be used with a fixed IP.

Connect the Internet connector of the gateway to the DSL or cable modem LAN Ethernet connector. The DSL of cable modem should have the LAN network connector configured as a DHCP server. Check with the equipment manual to verify the LAN connector configuration.

For operation the WiFi Hotspot users will use the wireless network or kiosk computers. Connect wireless access points and kiosk computers to the gateway LAN ports.

If you wish to connect more devices then connect an Ethernet switch to one of the LAN ports.

Default Port Configuration

Power, 12volts, 3A

Reset to Factory Defaults: Connect the Ethernet cable of the WAN1 port to the computer Ethernet port. Set the computer IP: **192.168.200.2** Open the browser at <http://192.168.200.1> The browser will open a box then enter Username: **reset** Password: **reset** The screen will show a reset button which must be clicked to reset the unit to factory default settings

Support@guest-internet.com Copyright © Fire4 Systems Inc., 2012. All rights reserved.

First Time Product Configuration

Connect your laptop computer to one of the LAN ports of the gateway. Connect the Internet port to your DSL router.

Open your computer browser. Instead of your login page you will see the page shown below. This page is the SETUP WIZARD.



The setup process has four steps. Follow the instructions to type in the information requested on each page. Then click on the button to go to the next page. When the setup process is completed your personalized wireless Internet service will be ready for your guests to start using. The setup process is shown overleaf: flip this page over to start the setup process.

Login to the Admin pages at any time. Connect your computer to the gateway via an Ethernet cable to the LAN port. Then open your browser and type in the URL:

<http://aplogin.com/admin>

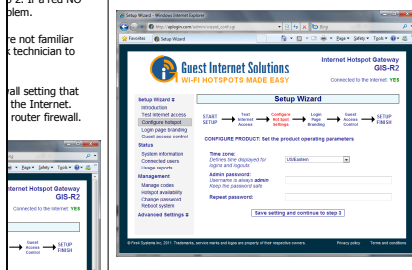
The username is **admin**, and the password is the one that you entered with the wizard.

When the page opens select the option you need in the menu. See the manual for more information about configuration.

Hotspot Gateway Product Setup - Quick Start Guide 2

Download the product manual at: <http://www.guest-internet.com/gateway>

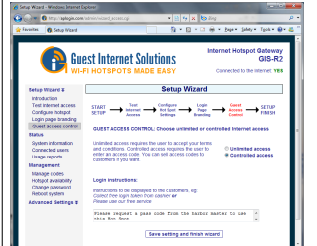
Step 2: configure hotspot settings
Select your time zone and set your password. Note your password and keep in a safe place.



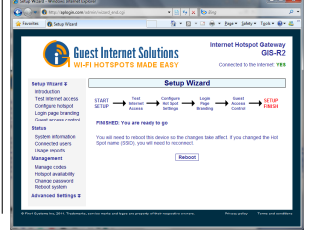
Step 3: login page branding
Your guests will see this information on the login page



Step 4: select guest access
If you select unlimited access then your guests will click on a disclaimer to access the Internet. If you select controlled access then you will have to generate access codes for your guests.



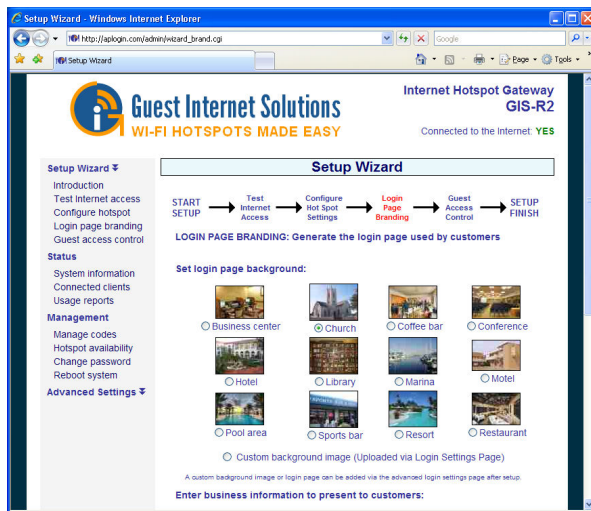
Finished, click on reboot to start your hotspot
After reboot wait two minutes then open your browser to see your login page. If you want to make changes then login again and click on the setup wizard.



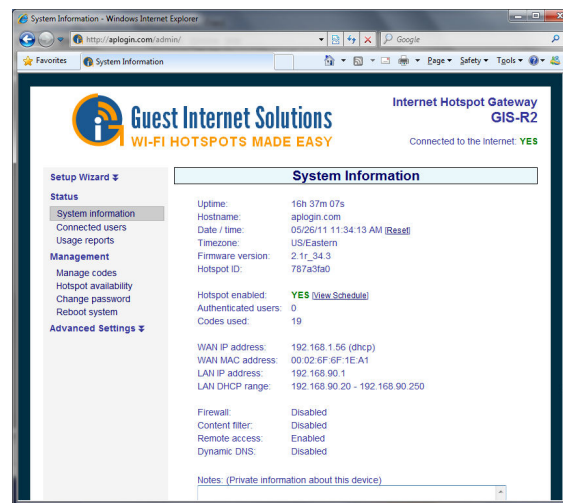


Guest Internet GUI: graphic user interface

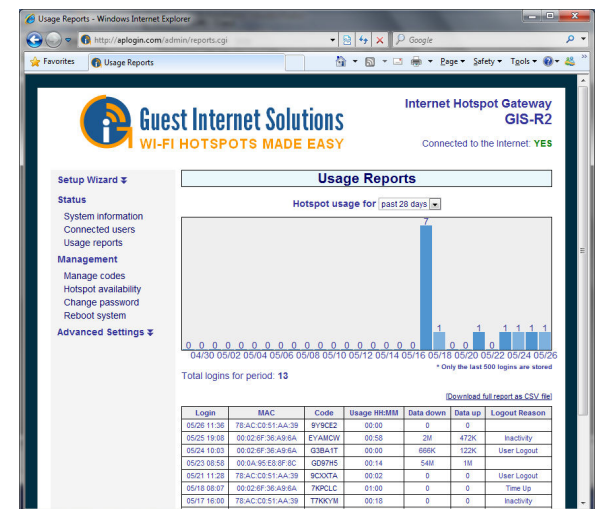
- Guest Internet products are easy to use because the graphical interface was developed for business managers, no specialist skills are required to install and operate GIS products
- Technical installers also benefit from the GIU because an install can be completed in a few minutes, maximizing profit.



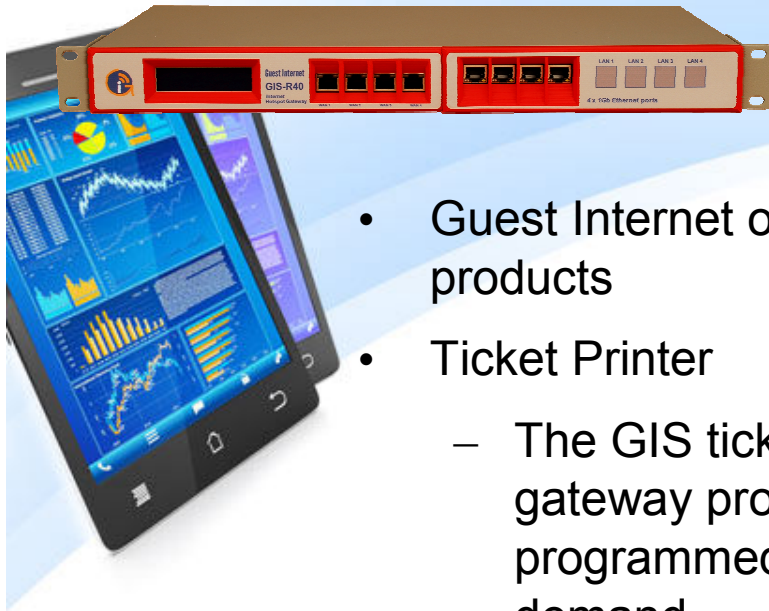
Setup wizard



Dashboard screen

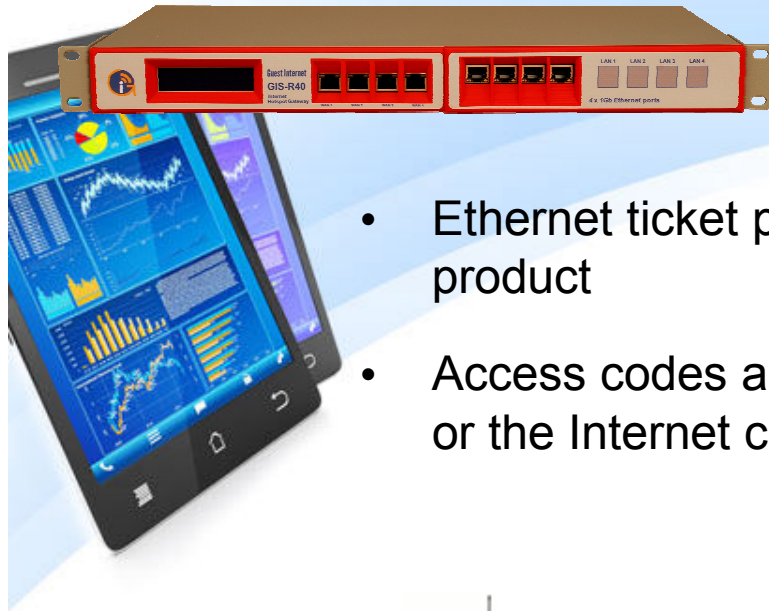


Usage reporting



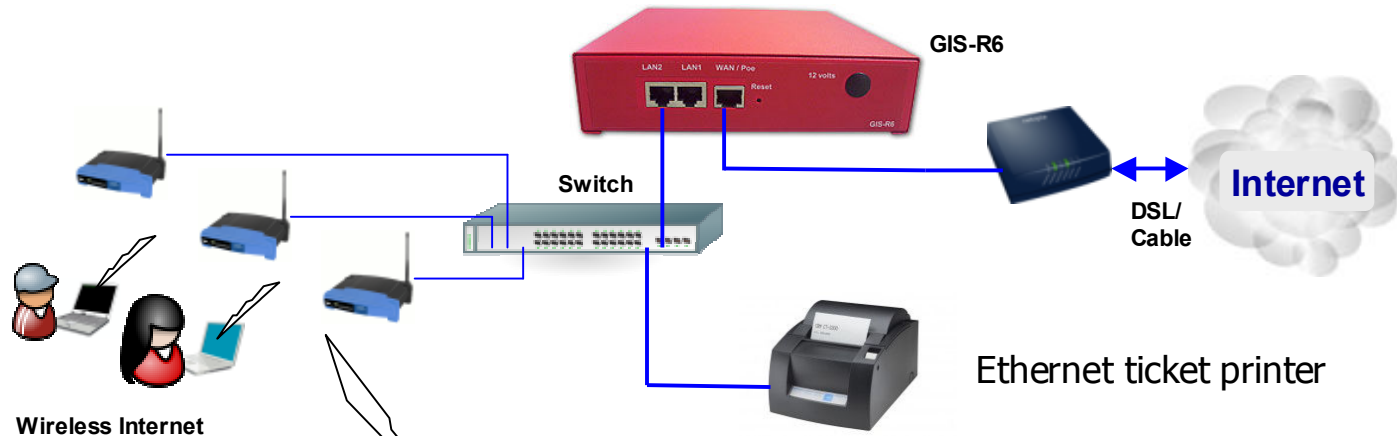
Guest Internet accessories and services

- Guest Internet offers additional accessories and services for GIS products
- Ticket Printer
 - The GIS ticket printer can be connected to any Guest Internet gateway product via an Ethernet connection. The printer can be programmed to print ten different access code configurations on demand
- Cloud Controller
 - The GIS Cloud Controller is a cloud based service for Guest Internet customers who wish to manage multiple gateways and have central access code authentication, reporting and management. The Cloud Controller is ideal for WISPs and for IT firms that provide managed services for Hotspot installations
- Custom login pages
 - All GIS products can have custom login pages installed. We provide a login page design and implementation service for customers and resellers



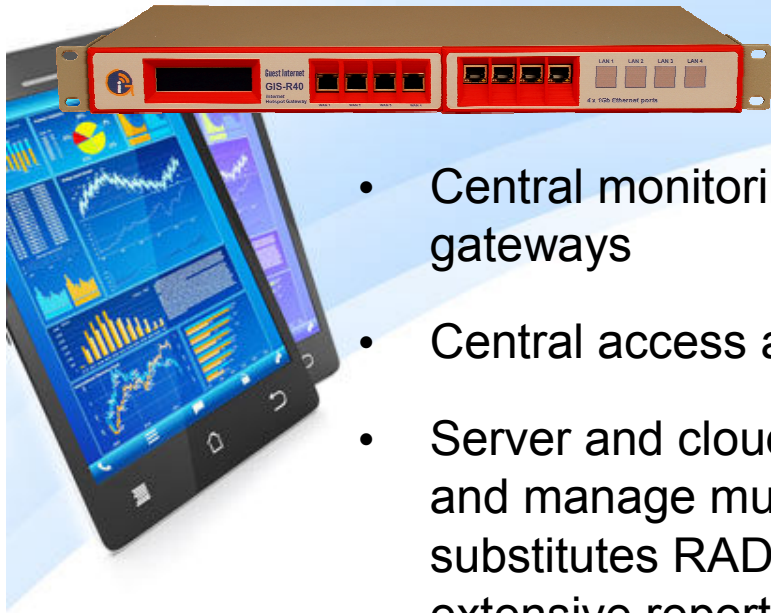
Guest Internet ticket printer

- Ethernet ticket printer can be connected to any GIS gateway product
- Access codes are printed on-demand by the hotel reception desk, or the Internet café PoS



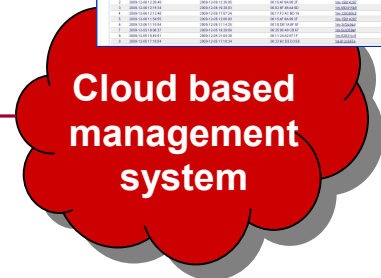
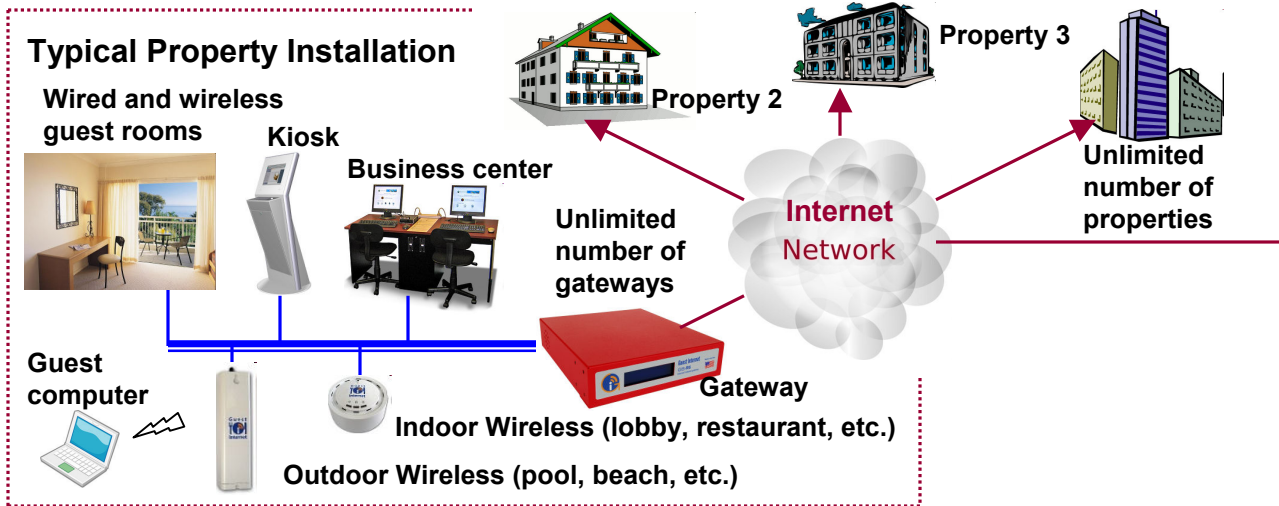
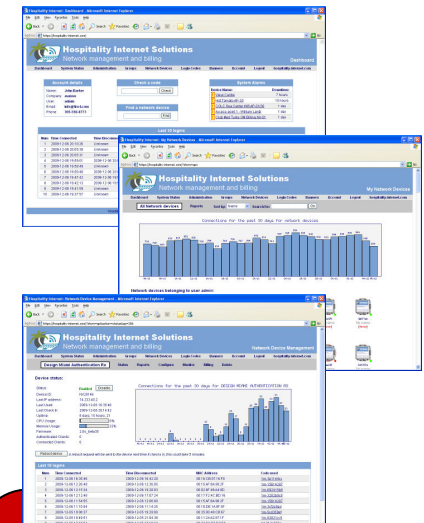
Android 7" tablet (approx \$100) used to display ticket buttons. Touching a button prints a ticket with an access code on the ticket printer



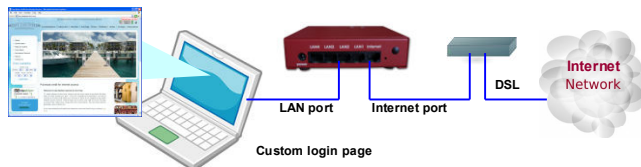
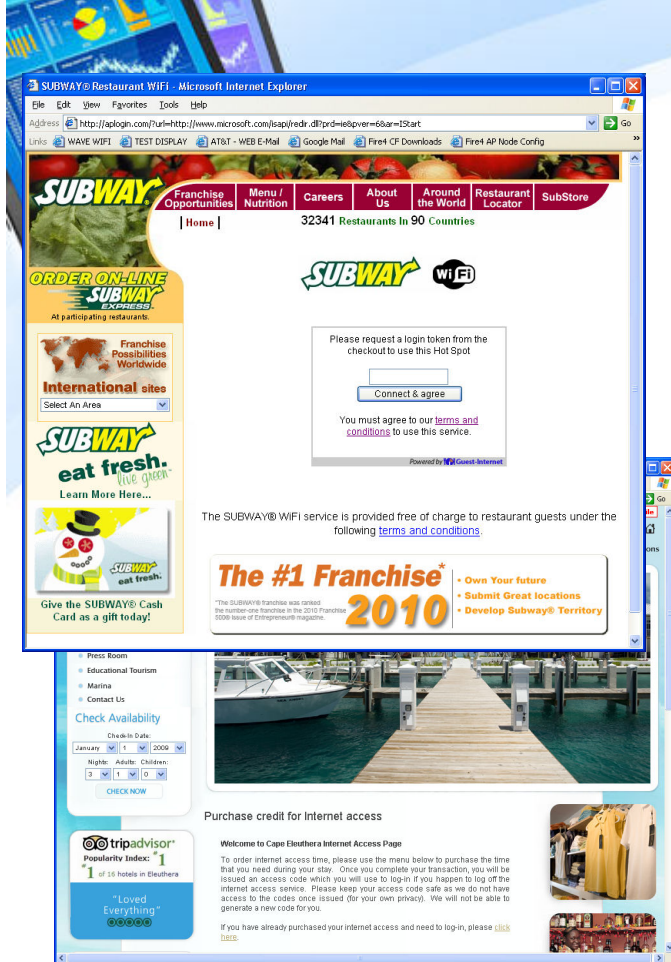


Guest Internet cloud service

- Central monitoring and management of multiple gateways
- Central access authentication
- Server and cloud options to remotely monitor and manage multiple GIS gateway products. substitutes RADIUS and SNMP, together with extensive reporting, all in a low cost plug and play package



Custom login page design



- One low fee to develop a custom login page using your website design, delivery is 5 business days
- Plug and play: the custom login page is provided in one easy to install file
- Low cost marketing for any Internet WiFi Hotspot that uses the Guest Internet range of gateways
- The custom login page promotes your branding and is compatible with your website design
- The custom login page can be configured to collect user information and send to you via email
- The custom login page can be part of a walled garden, where the user navigates between the login page and your website seamlessly, enhancing the marketing of your website
- Custom login pages are compatible with all types of computers: laptops, tablets, iPads® and smartphones
- Advertising can be added to the custom login page via banners

Guest Internet factory support



- Customer support includes:
 - Trouble ticket technical support
 - 1 year warranty
 - RMA service: repair or replace under warranty
 - New product updates: announced on the admin page
 - Custom login page design and development service: cost is approximately \$150 to \$500 depending on the complexity of the project



Thank you

All product and company names are trademarks™ or registered® trademarks of their respective holders.

Use of them does not imply any affiliation with or endorsement by them.

All specifications are subject to change without notice.